

Palm Access Control™

Demo Kit

User application manual

v. 3.0

Introduction

Thank you for purchasing an Palm access control™ Demo Kit.
This document will explain how to use an Palm access control application.

System Requirements

Intel® Core™ 2 Duo CPU processor 2.00 GHz or higher
At least 2GB of RAM
32-bit operating system
Windows XP (SP2, SP3), Windows Vista or Windows 7

Contents

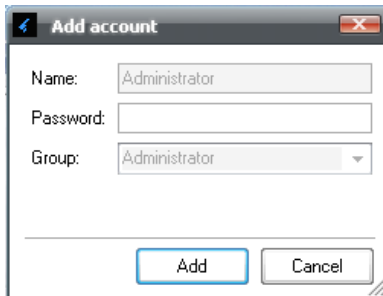
Introduction	2
System Requirements	2
Accounts.....	4
• Adding accounts	5
• Deleting accounts	5
• Editing accounts details	5
System configuration	6
Identification process.....	8
Users' management.....	9
• Adding new user	9
• Editing user data	10
• Deleting user	10
Groups' management	11
• Adding group	11
• Editing group data	12
• Deleting group	12
Entrance log	13
• Deleting entrance log	13
• Searching entrance log	14

Accounts

The system allows you to define two types of accounts:

- **Administrator**- allows a full control of the system
- **User** - allows retrieving of log details only.

It's required to define a system administrator on the application first run:

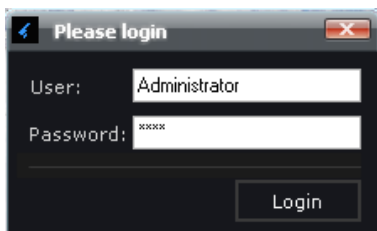


The 'Add account' dialog box contains the following fields and controls:

- Name: Administrator
- Password: (empty)
- Group: Administrator
- Buttons: Add, Cancel

Please provide a password for administrator account and press “Add” button.

Next time starting the application you will be required to specify defined username and password:

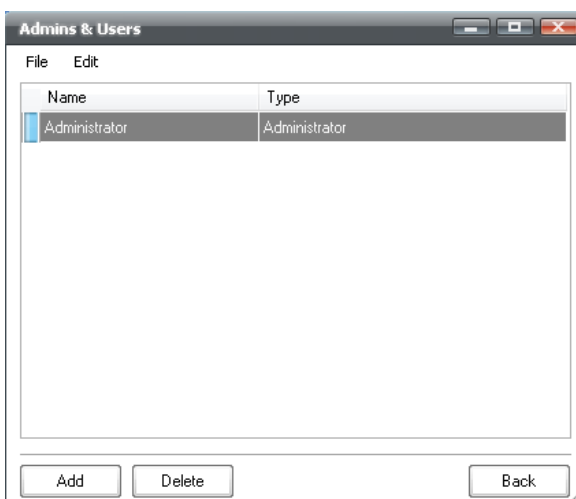


The 'Please login' dialog box contains the following fields and controls:

- User: Administrator
- Password: xxxxx
- Button: Login

To change accounts settings please press an “Accounts” button on the main application window.

The following window will appear:



The 'Admins & Users' window displays a table with the following data:

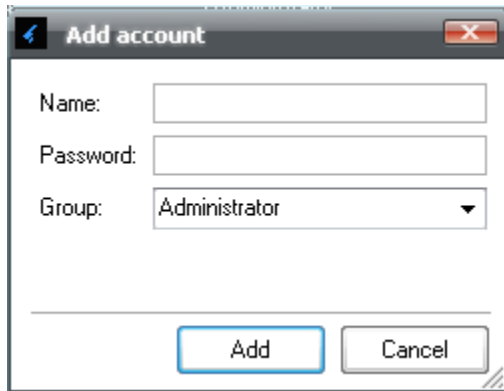
Name	Type
Administrator	Administrator

Buttons: Add, Delete, Back

- **Adding accounts**

Press “Add” button on “Accounts” window or choose File→Add new from menu.

The following window will appear:



The screenshot shows a dialog box titled "Add account". It has three input fields: "Name:" with an empty text box, "Password:" with an empty text box, and "Group:" with a dropdown menu showing "Administrator". At the bottom, there are two buttons: "Add" and "Cancel".

Specify a name, password and account type and press “Add” button.

The new account will be added.

To switch accounts exit application and then login with another one.

- **Deleting accounts**

To delete an account please choose an account from the list and press a “Delete” button.

The selected account will be deleted.

- **Editing accounts details**

There’s an option to edit the following account settings:

- Name
- Password
- Account type

To change any of those details please choose an account from the list, then go to the menu: Edit→ Change name/ Change password/ Change permission

Specify a new data and press “Change” button to change a details or “Cancel” to cancel an operation.

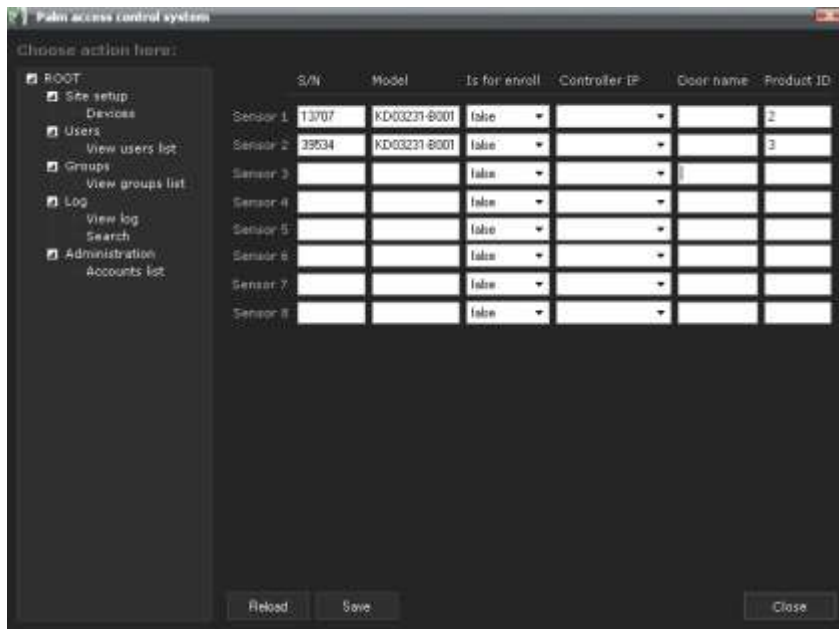
System configuration

It's required to configure palm devices on the application first run.

Note: The maximum number of connected devices allowed is 8.

In order to use an enrollment option you must configure one of the devices for the enrollment. The enrollment device must be connected straight to the PC (that contains the Access Control application), in order to simplify an enrollment process.

The following configuration window will appear on the system startup:



To configure a device you must enter the following details:

- Serial number of the sensor (5 digits), found on the back of the device. Usually the number you see on the back of the device will be much longer, for example: KA00033357. Just take 5 last digits of the number and type it at the serial number field.
- Sensor model. The application supports: “KD03231-B001” model only.
- Is for enroll. Specify “TRUE” value for the device that would serve for enrollment. Specify “FALSE” value for an identification purposes. Note: you may configure only one device for enrollment.
- IP address. IP address is the address of the controller connected to the door. The IP addresses are listed in the field. Just choose a suitable IP from the list.
- Door name. You may specify a door name, for example: “Enrollment station” or “Main entrance” etc.

- Product ID. Each device has its **unique** product ID. The product id may found at the back of the device.

Press a “Save” button to save a settings to the configuration file.

Press a “Reload” button to reload last saved configuration from file.

Press a “Cancel” button to cancel device configuration process.

It’s possible to reconfigure devices later, by pressing on the “Devices” button on the main application window:

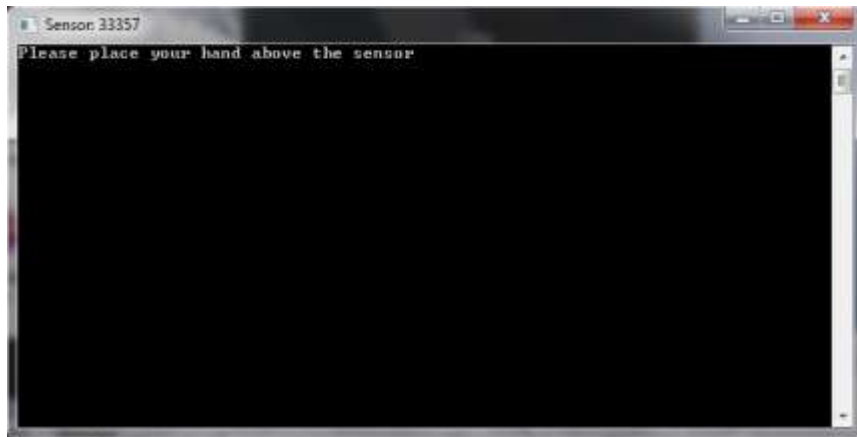


Identification process

After configuring devices, the system is started up in the identification mode. Please make sure the sensors connected to the PC. If not – please reconnect and restart the application.

While an identification running a debug window will opening for each one of the sensors with the device number specified on the window caption.

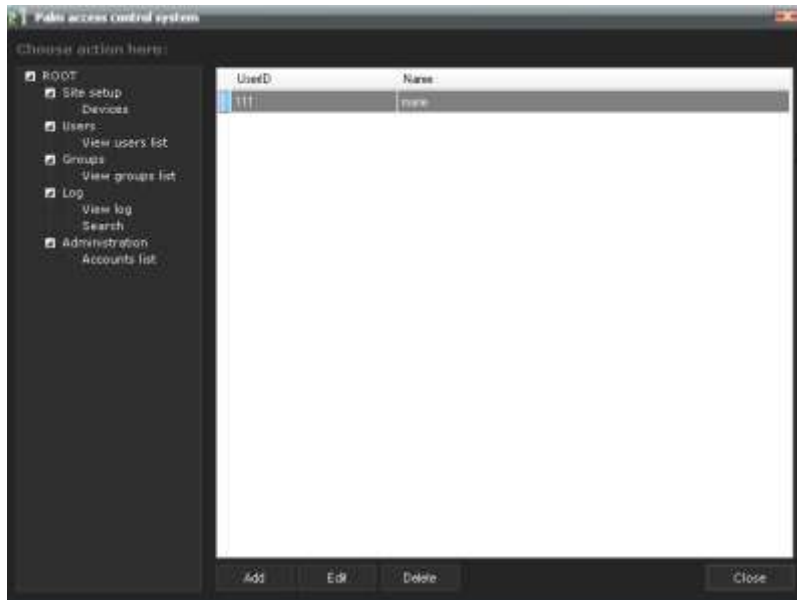
For example a debug window for device 33357(awaiting identification):



Users' management

Allows adding, editing and deleting users from the database.

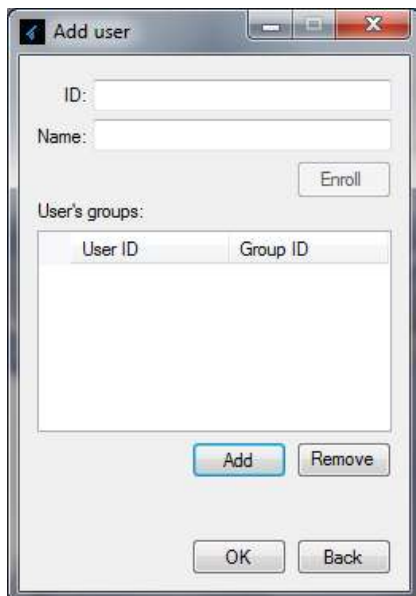
Press a "Users" button on the main application window to open a "Users" dialog.



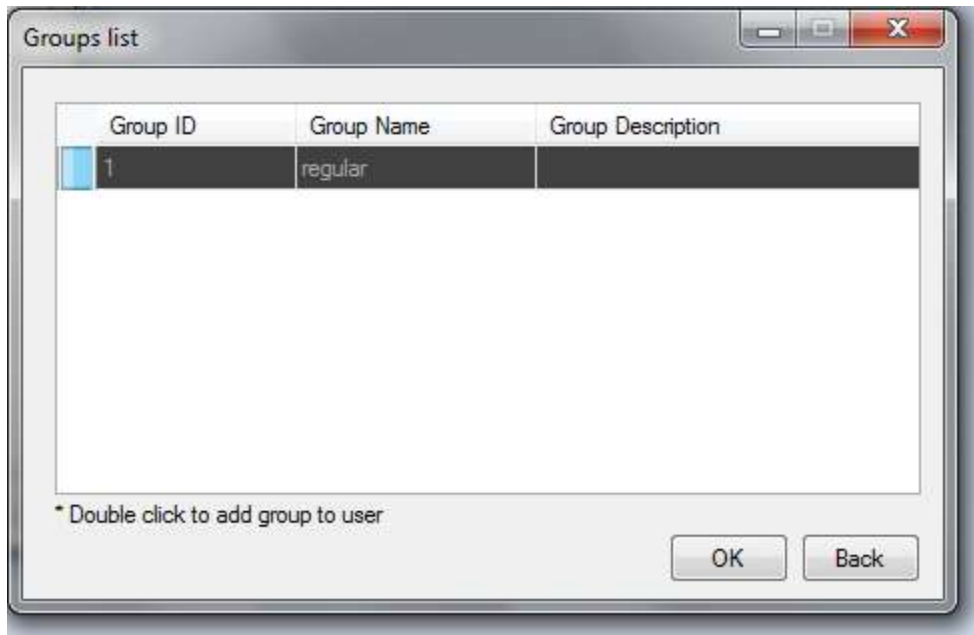
- **Adding new user**

Press an "Add" button to Add new user.

The following window will open:



Fill in Id and name. Choose groups a new user will belong to by pressing “Add” button at the window. Groups’ list window will open.



Double click on the group you want to choose. It's allowed to choose more than one group. Press OK when finished.

Note: groups must be configured before adding users.

After pressing “OK” you will return to the adding user window.

To enroll user's template press an “Enroll” button. It's possible to re-enroll later, by editing user.

Note: The enrollment sensor must be configured before starting enrolling.

Press OK button while finished, to save the user at DB, or “Back” to cancel adding.

- **Editing user data**

Choose a user from the list and press “Edit” button.

The editing window will open. Change the details you want, add or delete groups, or re-enroll palm data. Press “OK” to save or “Back” to cancel.

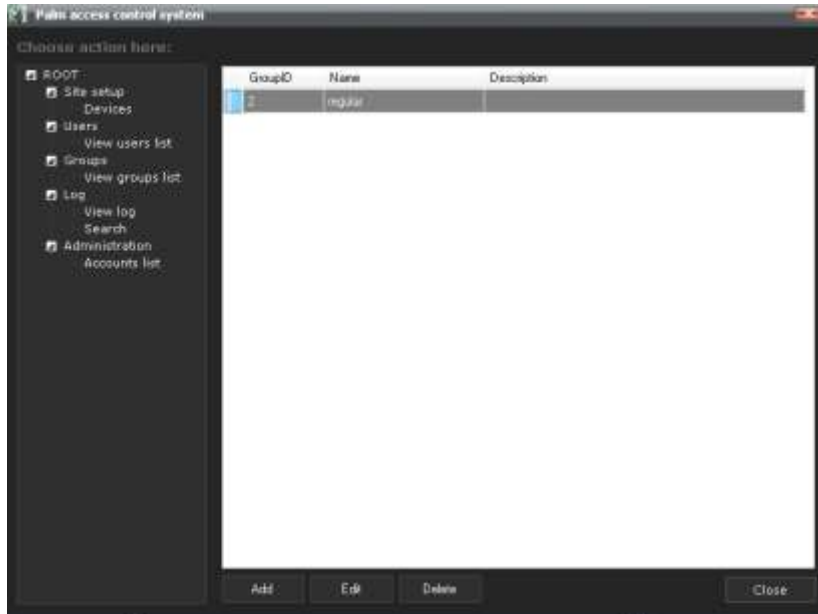
- **Deleting user**

Choose a user from the list and press “Delete” button. The user will be deleted from DB.

Groups' management

Allows adding, deleting and editing group permissions.

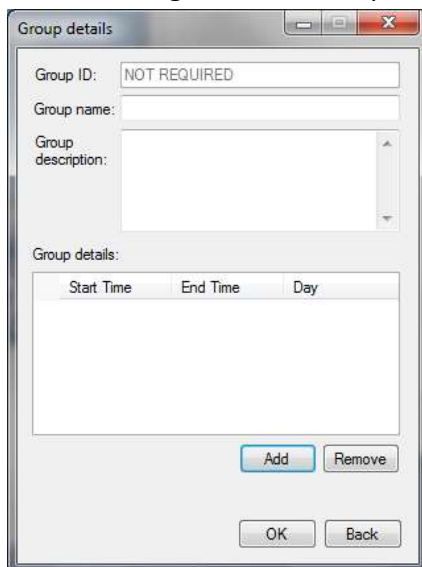
Press "Groups" button on main application window to open a groups dialog:



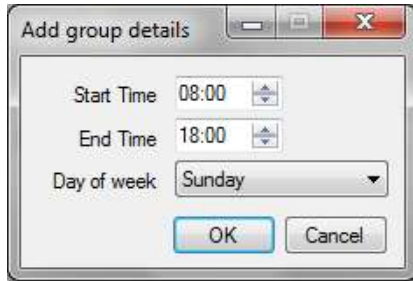
- **Adding group**

Press an "Add" button to Add new group.

The following window will open:



Specify a name and group description. Press an “Add” button to add a day and time permissions. The following window will open:



Choose a day of the week, start time and end time for entrance, and press “OK” button to save or “Cancel” button to cancel.

Press “Remove” button on the adding window to remove a group. Press “OK” button to save or “Back” to cancel adding.

- **Editing group data**

Choose a group from the list and press “Edit” button. The editing window will open.

Change name, or add/delete day and time permissions and press “OK” button to save.

Press “Back” button to cancel.

- **Deleting group**

Choose a group from the list and press “Delete” button. The group will be deleted from the DB.

Entrance log

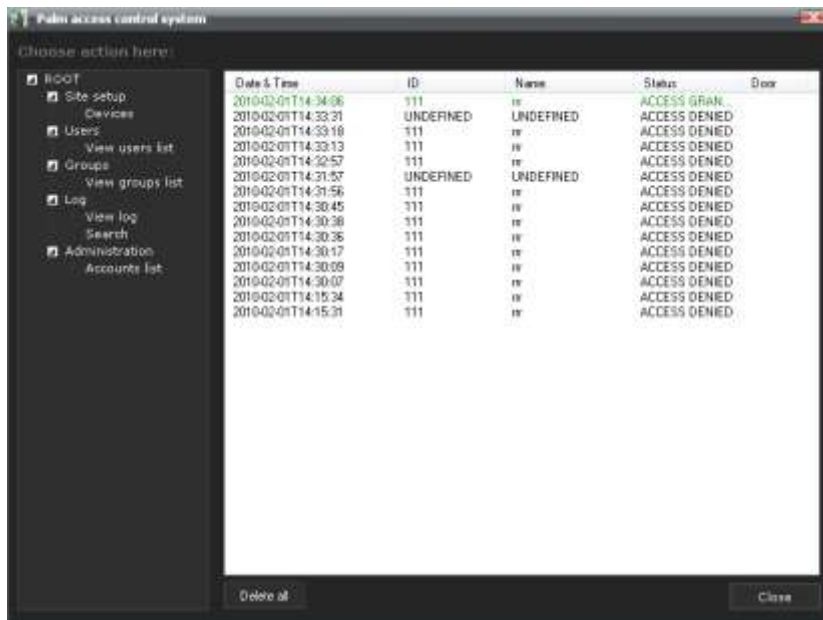
Entrance log provides an ability of monitoring users entrances (at the real-time) from defined devices.

The Entrance log includes the following information:

- Date & Time of identification
- Identified user ID
- Identified user name
- Access status: Granted/Denied
- Door name (where user was identified)

Press “Log” button on the main window to open a log window.

Note: the log window opens automatically after devices configured.



- **Deleting entrance log**

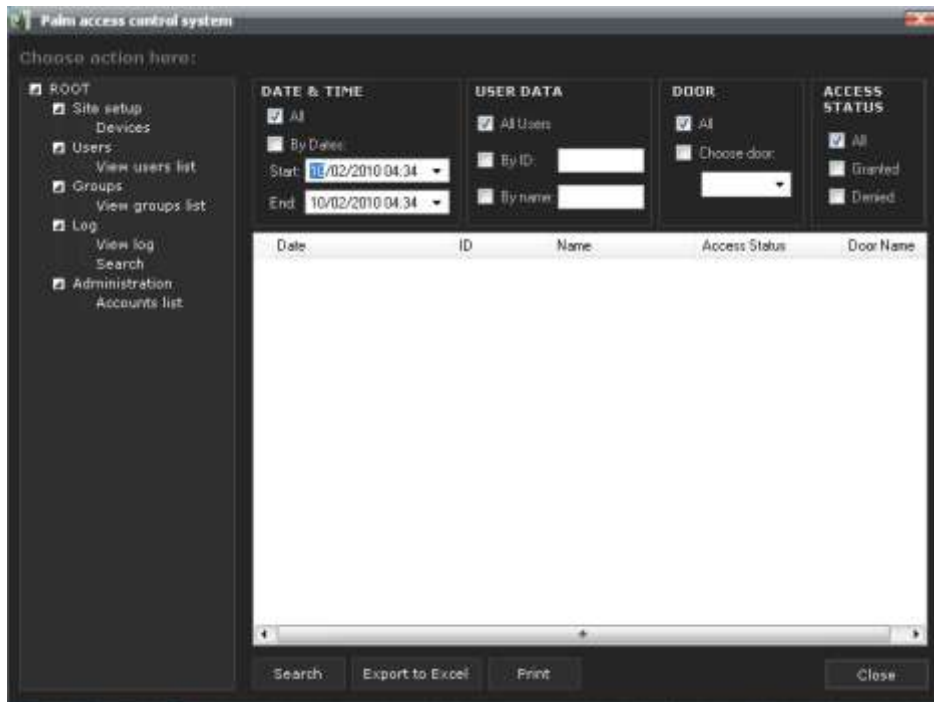
To Delete log file press “Delete All” button on the “Entrance log” window.

The log details will be completely deleted from the DB.

- **Searching entrance log**

The system provides you a searching ability, used to retrieve a specific information for user entries. For example: retrieving all door names where user '123' entered at date 01/09/2009 etc'.

To search a log file press a "Search log" button on the entrance log window. The following window will appear:



Mark the details you want to search by and press a "Search" button. There's an option either to print or to export found data to excel file.